

# Artificial Intelligence Programming

## Agents and Environments

Chris Brooks

Department of Computer Science  
University of San Francisco

Department of Computer Science — University of San Francisco — p. 1/77

### 3-2: Overview

- What makes an agent?
- Defining an environment
- Types of agent programs

Department of Computer Science — University of San Francisco — p. 2/77

### 3-3: Overview

- What makes an agent?
- Defining an environment
- Types of agent programs

Department of Computer Science — University of San Francisco — p. 3/77

### 3-4: Intelligent Agents

- The idea of developing *intelligent agents* has been a unifying one for AI.
  - Previously, subdisciplines were fairly balkanized.
  - Learning, knowledge representation, search, vision, etc.
- Agent programs that may require several of these abilities.

Department of Computer Science — University of San Francisco — p. 4/77

### 3-5: What is an agent?

- There are lots of potential definitions ...
- R & N: An agent is anything that can be viewed as perceiving its environment through sensors and acting on that environment through actuators.
- Woolridge: An agent is a computer system that is *situated in an environment* and is capable of *autonomous action*.

Department of Computer Science — University of San Francisco — p. 5/77

### 3-6: Qualities of an agent

- Autonomy
- Adaptation
- Goal-directed behavior
- Has "beliefs" and "intentions"
- Proactive
- Situated within an environment

Department of Computer Science — University of San Francisco — p. 6/77

### 3-7: Autonomy

- Autonomy is a quality often attributed to agents.
- An autonomous agent is able to rely on its percepts and past experience to make decisions, rather than asking a human for help.
- This is a thorny area - most agents will not have complete autonomy.
  - When might we not want an agent to have complete autonomy?
- Challenge: Designing an agent that can reason about its own autonomy and know when to ask for help.

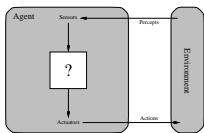
### 3-8: Agent-oriented Programming

- We can also think of agents as a programming paradigm.
  - The next logical step after objects.
  - “Objects do it for free, agents do it for money.”
- Objects are *receivers* of actions, agents are actors.
- It's less useful to think of agent as an *objective* label than as a *subjective* description.
- Agency is a useful abstraction for us as programmers.
  - Allows us to think about a program at a higher level.
- Treat something as an agent if that helps to understand, predict, or explain its behavior.
  - Thermostats as agents

### 3-9: Usefulness of the agent metaphor

- Why bother with all this? We already know how to write programs.
- Agents tend to be *open-ended* programs
  - Difficult to specify in advance what they should do in all cases.
- It's helpful to talk about them as *if* they were intelligent.
- “The robot wants to find the power supply.”
- “The server believes that the client has reset.”
- This assigning of mental states to programs is called the *intentional stance*.

### 3-10: Agents and Environments



- One shift from other courses: we'll think explicitly about an agent's *environment* and how that affects execution.
- Percepts: Information delivered to an agent's sensors. (light, sound, EM waves, signals)
- Sensors: An agent's mechanisms for gathering data about its environment. (eyes, ears, photoelectric cells, ...)
- Actuators: An agent's mechanisms for affecting its environment. (Wheels, arms, radios, lights, etc)
- Actions: Actual changes to the environment. (running, rolling)

### 3-11: Agent Programs

- We can describe our agent's behavior as a function  $F$ :
- Action =  $F(\text{current-percept}, \text{percept-history})$ .
- Maps a percept sequence to an action.
- Actually implementing this function is the work of an *agent program*.
  - That's what we'll spend most of our time on.

### 3-12: Example: Vacuum-cleaner World

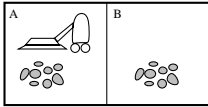
- Robotic vacuum cleaners are actually on the market.



- \$150 at Amazon
- A *reflex* agent (mostly)

### 3-13: Example: Vacuum-cleaner World

- Let's start with a very simple approximation.
- Two rooms, A and B. Each room can be either clean or dirty.
- This is the agent's *environment*.



- Sensors: Dirt sensor, location.
- Actuators: Vacuum, wheels.
- Percepts: Clean, Dirty
- Actions: Move left, move right, suck, do nothing.

### 3-14: Example: Vacuum-cleaner World

- In this simple world, we could list all the possible percept sequences and associated actions.
- This is known as a table-based or lookup agent.
- Question: How do we fill in the best action for each percept sequence?
- Great for simple worlds, but doesn't scale.
- We need a more compact representation for this table.

### 3-15: Rationality

- Roughly, rationality means “doing the right thing”
- More precision is needed - what is “the right thing”?
- We need a definition of success.
- Begin with a performance measure
  - This is a condition or state of the world we'd like the agent to achieve.
  - “Both rooms are clean.” (perhaps more criteria, such as minimizing time, power consumed, or number of actions taken)
  - We might prefer a scalar measure or a boolean condition.

### 3-16: Rationality

- Notice that this is a specification of an *outcome*, rather than how an agent should behave.
- A rational action is one that tries to maximize an agent's performance measure, given its percepts and actions.
- R & N: Rational agents: For each possible percept sequence, a rational agent should select an action that is expected to maximize its performance measure, given the evidence provided by the percept sequence and whatever built-in knowledge the agent has.

### 3-17: Rationality

- “expected” vs. actual. We don't require that our agent be able to predict the future, or predict unlikely events.
- Information gathering might also be a rational action.
  - Crossing the street without looking is irrational
- Rational agents must be able to *learn* (except in very simple, well-understood environments).
  - Learning is defined as improving an agent's performance.
  - This could mean reducing uncertainty, or taking observations into account.

### 3-18: Overview

- What makes an agent?
- **Defining an environment**
- Types of agent programs

### 3-19: Environments

- A criterion for being an agent is existing in an environment.
- Not necessarily physical - could be a software environment.
- R & N refer to the *task environment*
- Consists of:
  - Performance measure
  - Environment
  - Actuators available to the agent
  - Sensors available to the agent

### 3-20: Characteristics of the Environment

- Observability
- Deterministic/stochastic
- Episodic vs sequential
- Static vs Dynamic
- Discrete vs continuous
- Single-agent vs multi-agent

### 3-21: Observability

- The environment is fully observable if the agent's sensors always give it complete information about the relevant parts of the environment.
- Is there anything the agent needs to know that it cannot sense?
- Chess-playing: fully observable.
  - What about the other player?
- Vacuum cleaner: partially observable (can't see if there's dirt in the adjacent square)

### 3-22: Deterministic/stochastic

- We can think of the world as going through *state transitions*.
- $CurrentState \times agentActions \rightarrow newState$
- If the state transition is unique, the world is deterministic.
- Does an action always produce the same result?
- chess-playing: deterministic
- Vacuum world: deterministic
- Driving a car: stochastic

### 3-23: Deterministic/stochastic

- Note: we're avoiding splitting hairs with quantum-mechanical questions here - it's possible that the world could be deterministic, but *appear* stochastic due to its complexity.
- How does the world appear *to the agent*.

### 3-24: Episodic vs Sequential

- Episodic: each action is independent.
  - Agent perceives, decides, acts. Start again.
  - Next decision does not depend on previous states.
  - A spam-filtering agent is episodic.
- If the agent must take a series of actions to accomplish a task or achieve a goal, the environment is sequential.
  - Future decisions must be considered.
  - Driving a car is sequential.

### 3-25: Static vs Dynamic

- A static environment “holds still” while the agent is deciding on an action.
- Agent is not under time pressure to come to a decision.
  - Spam-filtering is static.
  - Chess-playing is static.
- A dynamic environment changes while the agent is deciding what action to take.
- Harder: the agent must act “quickly enough”
  - Driving a car is dynamic

### 3-26: Static vs Dynamic

- Semidynamic: the environment doesn’t change, but the performance measure changes over time.
  - Taking a timed test
  - playing chess with a clock.
- Still pressure to act quickly.

### 3-27: Discrete vs. Continuous

- We can talk about discrete vs continuous in terms of the agent’s percepts, actions, or possible *states* of the environment.
- If the possible values for any of these are a discrete set, then the environment is discrete wrt that characteristic.
  - Discrete is not the same as finite.
  - A spam-filtering environment is discrete, even though there’s a (countably) infinite number of possible emails.

### 3-28: Discrete vs. Continuous

- A continuous environment has continuously-changing variables.
  - Steering angles in a car-driving environment.
  - Real-valued sensor readings. (we can split hairs about precision here; the point is whether or not there’s a distinguishable change between two values)
- Time is the element we’ll often be concerned with.

### 3-29: Single-agent vs. Multiagent

- Single-agent. Our agent is acting on its own.
  - World may still be stochastic
  - Spam-filtering is single-agent.
- Multi-agent: The actions/goals/strategies of *other agents* must be taken into account.
  - Chess-playing, bidding in an auction
- Issues
  - Even though a world may have other agents, we may choose to treat it as single-agent and stochastic for complexity reasons.
    - e.g. an agent controlling traffic signals.
  - Cooperative vs. Competitive

### 3-30: Some examples

- Chess-playing, Monopoly-playing, slot-machine playing
- Robot getting me coffee in Harney
- Mars orbiter
- Web-crawling agent
- Conversational agent
- Medical diagnosis agent

### 3-31: Overview

- What makes an agent?
- Defining an environment
- Types of agent programs

### 3-32: Types of agent programs

- Typically, we can't enumerate every possible percept sequence and action.
  - Too many possibilities.
  - We as programmers may not know what to do for each sequence.
  - We may not understand the problem well enough.
- Need to create a more compact representation.

### 3-33: Types of agent programs

- Table-driven agent
- Reflex agent
- Model-based reflex agent
- Goal-based agent
- Utility-based agent
- Learning agent

### 3-34: Table-driven agent

- Keep a dictionary that maps percept sequences to actions.

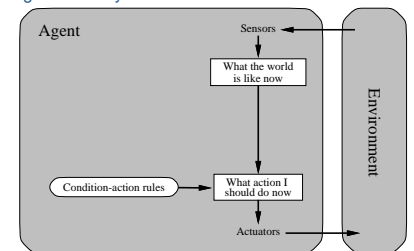
```
class TableDrivenAgent(Agent):
    """This agent selects an action based on the percept sequence.
    It is practical only for tiny domains."""
    def __init__(self, table):
        #Supply as table a dictionary of all {percept_sequence:action} pairs.
        self.percepts = []
    def program(percept):
        self.percepts.append(percept)
        action = table.get(tuple(percepts))
        return action
```

### 3-35: Examples of table-driven "agents"

- Exception handlers
- Square root/logarithm tables
- Won't scale to AI environments.
  - Chess:  $10^{150}$  percept sequences.
  - And this is an "easy" environment. Deterministic, fully observable.
  - Taxi driving:  $10^{250,000,000,000}$  entries for one hour of driving.
- Also: highly redundant and uninformative
  - Many percept sequences may lead to the same action.
  - Designer has no guidance as to how to fill in the table.

### 3-36: Reflex agent

- Given the current percept, select an action.
- Ignore history.



### 3-37: Reflex agent

- Given the current percept, select an action.

```
class ReflexVacuumAgent(Agent):
    "A reflex agent for the two-state vacuum environment. [Fig. 2.8]"

    def program((location, status)):
        if status == 'Dirty': return 'Suck'
        elif location == loc_A: return 'Right'
        elif location == loc_B: return 'Left'
```

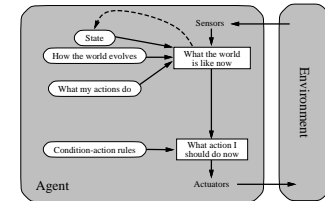
- This agent will only be rational if the best action can be chosen based only on the current percepts.

### 3-38: Reflex Agents

- Examples of reflex agents
  - Thermostat agent
  - Spam-filtering agent (sometimes)
- Insight: table can be represented more compactly as a set of *condition-action* rules.
- Problems:
  - Writing rules that apply in all cases is hard.
  - Often it's necessary to remember some of the past.

### 3-39: Model-based reflex agent

- A model-based reflex agent maintains an internal representation of the world.
- Actions are selected based on the model and the current percepts.



### 3-40: Model-based reflex agent

- A model-based reflex agent maintains an internal representation of the world.
- Sometimes we'll refer to this as keeping *state* about the world.
- Actions are selected based on the model and the current percepts.

```
class ModelBasedVacuumAgent(Agent):
    "An agent that keeps track of what locations are clean or dirty."
    def __init__(self):
        model = loc_A: None, loc_B: None
    def program((location, status)):
        "Same as ReflexVacuumAgent, except if everything is clean, do NoOp"
        model[location] = status ## Update the model here
        if model[loc_A] == model[loc_B] == 'Clean': return 'NoOp'
        elif status == 'Dirty': return 'Suck'
        elif location == loc_A: return 'Right'
        elif location == loc_B: return 'Left'
```

### 3-41: Model-based reflex agent

- Maintaining a representation of the environment is extremely useful.
  - Allows the agent to remember things.
  - Can anticipate future events.
  - Can make predictions about unseen parts of the environment.
- Still uses rules, conditioned on the model and the sensors.
- Much of our time will be spent constructing and manipulating models.

### 3-42: Model-based reflex agent

- Examples of model-based agents
  - Vacuum-cleaner agent (with a map)
  - Spam-filtering agent (maybe)
  - Factory robots



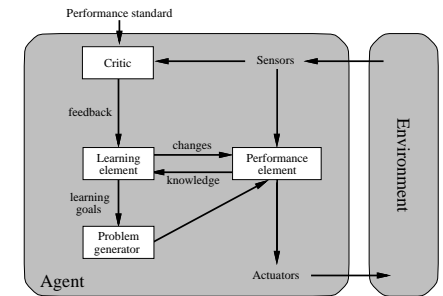
### 3-49: Learning Agent

- Often, an agent may need to update its agent program.
- Programmers may not completely understand the environment.
- The environment may change over time.
- Coding by hand may be tedious.
- A learning agent is one that improves its performance wrt a set of tasks over time.
- Learning (or adaptation) is essential in complex environments.

### 3-50: Learning Agent

- A learning agent needs both a *performance element* and a *learning element*
  - Performance element: Select current action(s)
  - Learning element: evaluate the correctness of the performance element.

### 3-51: Learning Agent



### 3-52: Learning Agent

- Learning can happen *offline* or *online*.
- Learning can be *passive* or *active*.
- Learning can be *supervised* or *unsupervised*.
- *Credit assignment* is a big problem when learning in sequential environments.
- Often, learning is treated as a separate topic in AI; we'll try to integrate it in with other topics.

### 3-53: Summary

- An agent is an *autonomous* program situated in an *environment*.
- An agent behaves *rationally* if it acts to optimize its expected *performance measure*.
- Characterizing the environment can help us decide how to build an agent.
- More complex environments often require more sophisticated agent programs.

### 3-54: Next week(s) ...

- We get into our first "meaty" topic: search.
- We'll look at how agents can perform goal-directed behavior by searching through a space of possible outcomes.
- Uninformed search.
- Applying domain knowledge - heuristic search, constraint satisfaction
- Searching enormous spaces: genetic algorithms and simulated annealing.